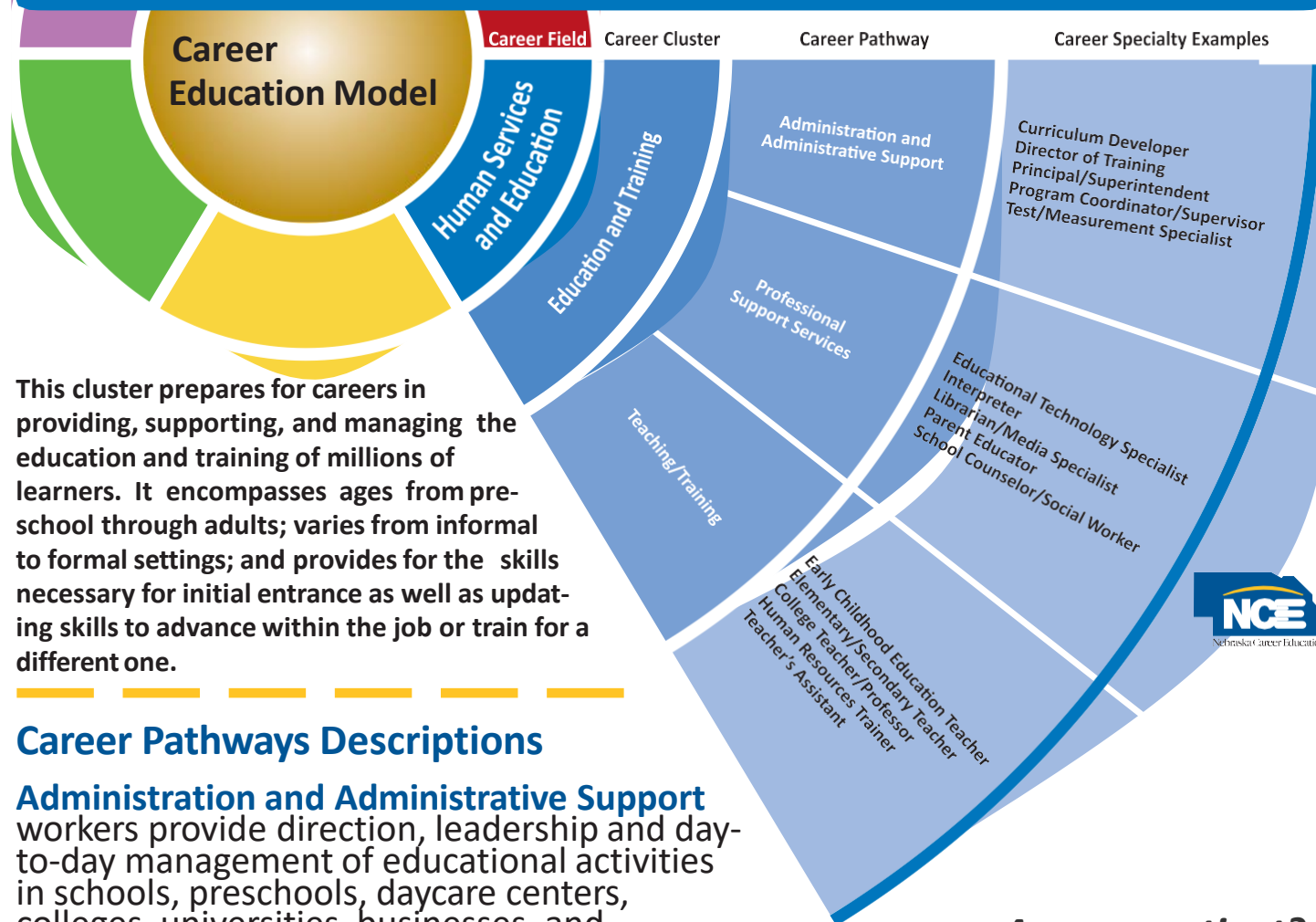


## Career Cluster: Education and Training



This cluster prepares for careers in providing, supporting, and managing the education and training of millions of learners. It encompasses ages from pre-school through adults; varies from informal to formal settings; and provides for the skills necessary for initial entrance as well as updating skills to advance within the job or train for a different one.

### Career Pathways Descriptions

**Administration and Administrative Support** workers provide direction, leadership and day-to-day management of educational activities in schools, preschools, daycare centers, colleges, universities, businesses, and industries, correctional institutions, museums, job training, and community service organizations.

**Professional Support Services** workers represent a variety of highly specialized occupations that are critical to our education and training system. Counselors, psychologists, social workers, speech-language pathologists and audiologists assist with personal and family needs, mental health assistance, educational goals, and career decision making.

**Teaching and Training** workers must have the ability to communicate, inspire trust and confidence, and motivate learners, as well as understand their educational and emotional needs. Teachers must be able to recognize and respond to individual differences in diverse learners, and employ different teaching/training methods that will result in higher learner achievement.

*Are you patient?  
Have you coached sports activities?  
Do you like to speak in front of groups?  
Have you helped out in a school or library?  
Do you enjoy teaching games to children?  
Are you outgoing?  
Do you like being in school?*

<https://azcis.intocareers.org/VideoPlayer.aspx?VideoFileNum=00-000005>

2:21 minutes video on this career cluster (you must be logged into AZCIS to see video)

# Occupations Examples

## Levels of Education and Earnings\*

\* Data from AZCIS

	National Annual Median Wage	Arizona Annual Median Wage
Postsecondary Vocational Training (Certificate or Diploma)		
<a href="#">Library Technical Assistants</a>	\$32,310	\$31,830
Associate Degree		
<a href="#">Preschool Teachers</a>	\$28,570 - \$51,640	\$23,560 - \$40,230
<a href="#">Teacher Aides</a>	\$24,900	\$23,710
Bachelor's Degree		
<a href="#">Adult and Vocational Education Teachers</a>	\$36,680 - \$67,480	\$34,640 - \$70,990
<a href="#">Coaches and Scouts</a>	\$31,000	\$27,450
<a href="#">Elementary School Teachers</a>	\$54,890	\$39,300
<a href="#">High School Teachers</a>	\$56,130 - \$57,200	\$44,970 - \$45,010
<a href="#">Interpreters and Translators</a>	\$44,190	\$43,910
<a href="#">Kindergarten Teachers</a>	\$28,570 - \$51,640	\$23,560 - \$40,230
<a href="#">Middle School Teachers</a>	\$55,190 - \$55,860	\$41,200 - \$42,890
<a href="#">Museum Technicians and Conservators</a>	\$40,340	\$40,370
<a href="#">Special Education Teachers</a>	\$53,990 - \$58,500	\$39,590 - \$44,930
Work Experience Plus a Bachelor's or Higher Degree		
<a href="#">Adult and Vocational Education Teachers</a>	\$36,680 - \$67,480	\$34,640 - \$70,990
<a href="#">Education Administrators</a>	\$45,670 - \$90,410	\$38,380 - \$75,920
Master's Degree		
<a href="#">Adult and Vocational Education Teachers</a>	\$36,680 - \$67,480	\$34,640 - \$70,990
<a href="#">Archivists</a>	\$50,250	\$44,530
<a href="#">College and University Administrators</a>	\$88,580	\$91,910
<a href="#">Curators</a>	\$51,520	\$50,160
<a href="#">Instructional Coordinators</a>	\$62,270	\$50,430
<a href="#">Librarians</a>	\$56,880	\$46,090
<a href="#">School Counselors</a>	\$53,660	\$44,430
Professional Degree		
<a href="#">Farm and Home Management Advisors</a>	\$49,190	\$51,800
Doctoral Degree		
<a href="#">University and College Teachers</a>	\$58,770 - \$105,250	\$48,750 - \$117,940



# Career Plan of Study

Learner Name \_\_\_\_\_

Date \_\_\_\_\_

Learner Signature \_\_\_\_\_

Advisor Signature \_\_\_\_\_

Parent/Guardian Signature (if required) \_\_\_\_\_

*This plan of study should serve as a guide, along with other career planning materials, as you continue your career path. Courses listed within this plan are only recommended coursework and should be individualized to meet each learner's educational and career goals. All plans should meet high school graduation requirements as well as college entrance requirements.*

	9 <sup>th</sup> Grade	10 <sup>th</sup> Grade	11 <sup>th</sup> Grade	12 <sup>th</sup> Grade
<b>High School</b>	English I	English II	English III	English IV
	Algebra I or Geometry	Geometry or Algebra II	Algebra II, Trigonometry or Statistics	Trigonometry or Statistics
	Physical Science or Biology I	Biology I or Chemistry I	Chemistry, or Physics	Physics or Environmental Science
	Geography/State History	World History	American History	Economics/Government
	<b>Required Courses/Electives</b> PE, Health, Art, Foreign Language, or Computer Technology	<b>Required Courses/Electives</b> PE, Health, Art, Foreign Language, or Computer Technology	<b>Additional High School Electives</b> Parenting & Child Development Marriage & Family Life Psychology Sociology	<b>Technology Center Electives</b> Child Care
<b>Career Electives</b> Healthy Life Choices	<b>Career Electives</b> Career Orientation			
<b>Post-Secondary</b>	<b>Career/Technical College</b>		<b>Community College</b>	<b>College/University</b>
	<ul style="list-style-type: none"> <li>☞ Child Care</li> </ul>		<ul style="list-style-type: none"> <li>☞ Pre-Education</li> <li>☞ Family Services and Child Development</li> <li>☞ Secondary Education</li> <li>☞ Health, Physical Education &amp; Recreation</li> <li>☞ English/Language Arts</li> <li>☞ Mathematics</li> <li>☞ Science</li> <li>☞ History</li> </ul>	<ul style="list-style-type: none"> <li>☞ Early Childhood Education</li> <li>☞ Elementary Education</li> <li>☞ Secondary Education</li> <li>☞ Health and Physical Education</li> <li>☞ Mathematics Education</li> <li>☞ Music/Vocal and Instrumental Educ</li> <li>☞ Science Education</li> <li>☞ Career &amp; Technology Education</li> </ul>
<b>Career Enhancement Options</b>	<b>Work-based Learning Options</b>		<b>Short-Term Training Options</b>	
	Job-Shadowing:  Internship/Mentorship:  On-The-Job Training:		<ul style="list-style-type: none"> <li>☞ Teacher Cadet</li> <li>☞ Child Care as a Profession</li> <li>☞ Physical and Intellectual Development</li> <li>☞ Planning a Safe, Healthy Learning Environment</li> <li>☞ Conversational Spanish</li> </ul>	